

Student View via Instructor Module

An instructor can use the Student View via the Instructor Module to experience exactly what a student experiences in the Student Module. The Student View for an instructor behaves as it would for a student: instructors take the ALEKS tutorial, complete the Initial Assessment, view their pie chart, enter Learning Mode, and can complete assignments if any have been created.

ALEKS Corporation will no longer provide Student Accounts to instructors who are set up in ALEKS. The Student View feature is a superior way of providing this access to instructors.

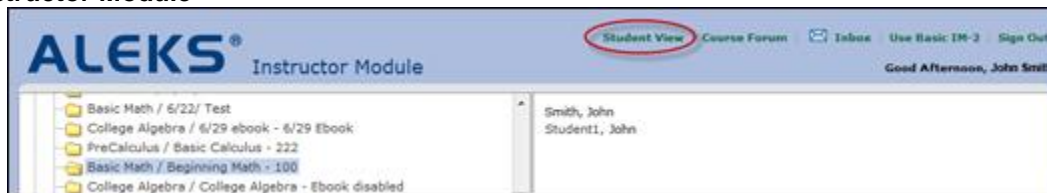
Note: The instructor's Student View is a virtual student account, meaning the student will not appear in the course roster, on any reports, or in the Gradebook.

Instructors can access the Student View in the Basic or Advanced Instructor Module after selecting a course.

Basic Instructor Module



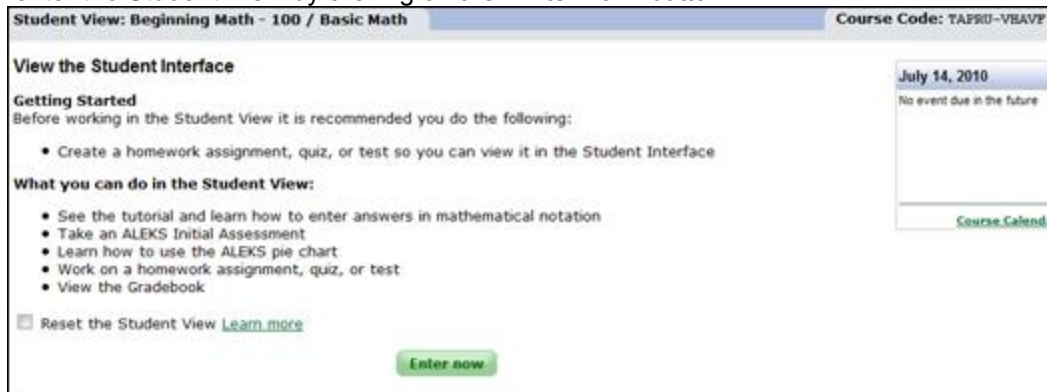
Advanced Instructor Module



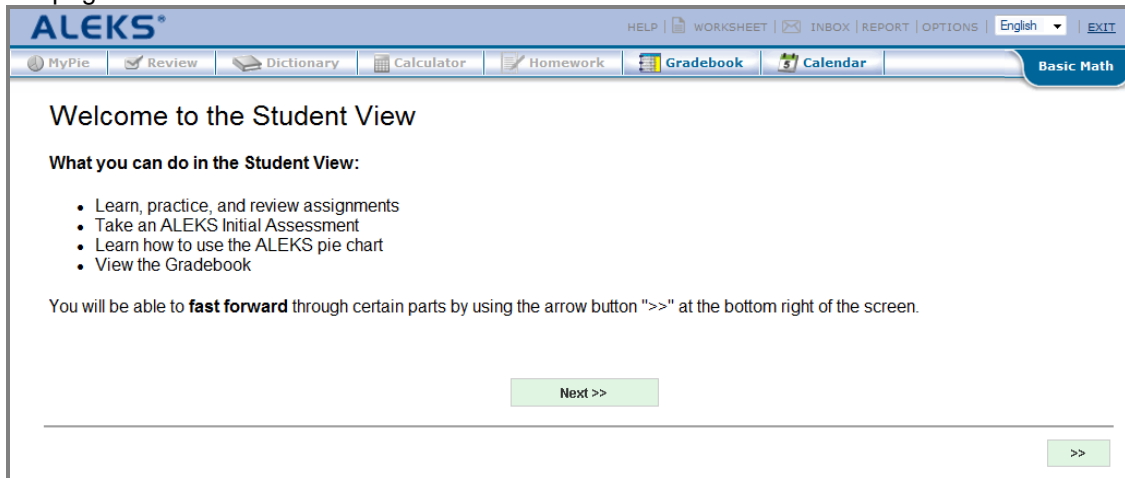
After clicking on “Student View,” instructors will arrive at a summary of the Student View feature. Before working in the Student View, it is recommended that instructors create a Homework, Quiz, or Test to complete in the Student View.

Note: The “Reset the Student View” checkbox can be used by instructors to reset the Student View to the beginning of the Student Module (i.e. the ALEKS tutorial); this will delete any previous work logged by the instructor in the Student View.

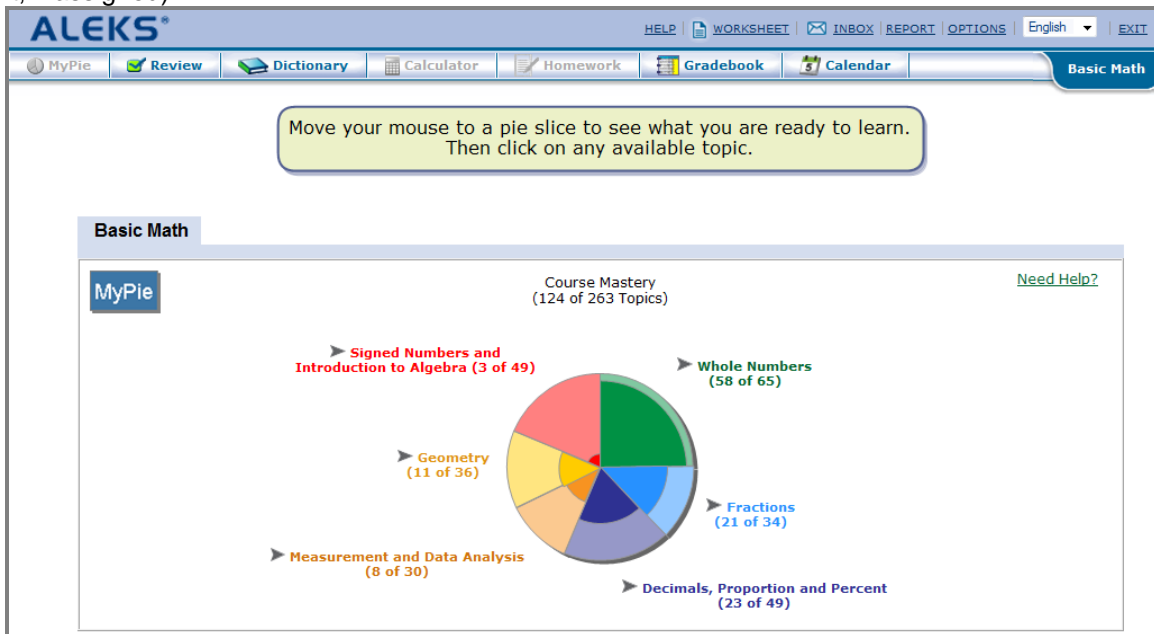
Instructors can enter the Student View by clicking on the “Enter now” button.



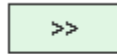
A pop-up window will appear with the Student View. If this is the instructor's first time in the Student View, he/she will see a welcome page.



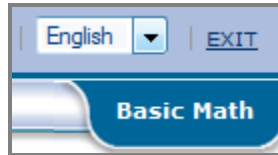
Instructors will experience in their Student Views exactly what a student would experience in the Student Module (i.e. take the ALEKS tutorial, complete the Initial Assessment, view their pie chart, enter Learning Mode, and complete an assignment, if assigned).



The next time instructors log into the Student View, they will be taken to the screen where they left off, unless they checked the “Reset the Student View” box on the summary page. From the welcome page, instructors can fast forward through the ALEKS tutorial and Initial Assessment by clicking the “>>” button, if needed.



To log out of the Student View, instructors should click on the “Exit” link in the upper right-hand corner of the window. Instructors will see a goodbye message and can then close the pop-up window.



Q&A

1. Will the Student View save the progress for an instructor’s multiple courses?

Yes, the progress in Student View will be saved for each course.

2. Is assessment data always saved in the Student View?

Data is always saved in the Student View, unless the checkbox next to “Reset the Student View” is checked on the summary page. Checking the box will reset the Student View, deleting any work completed in the Student View, including assessment data.

3. When you create a new course, will it include the Student View?

Yes, a virtual student will be included for each course created.

4. Can instructors use the Student View to view/access Homework, Tests, and Quizzes prior to making them available to the whole class?

Instructors will see what students see on an assignment when the assignment has been assigned to the whole class, not just to specific students. The Student View is a virtual student account, meaning the student will not appear in the course roster, on any reports, or in the Gradebook. Therefore, instructors cannot assign something to their Student View.