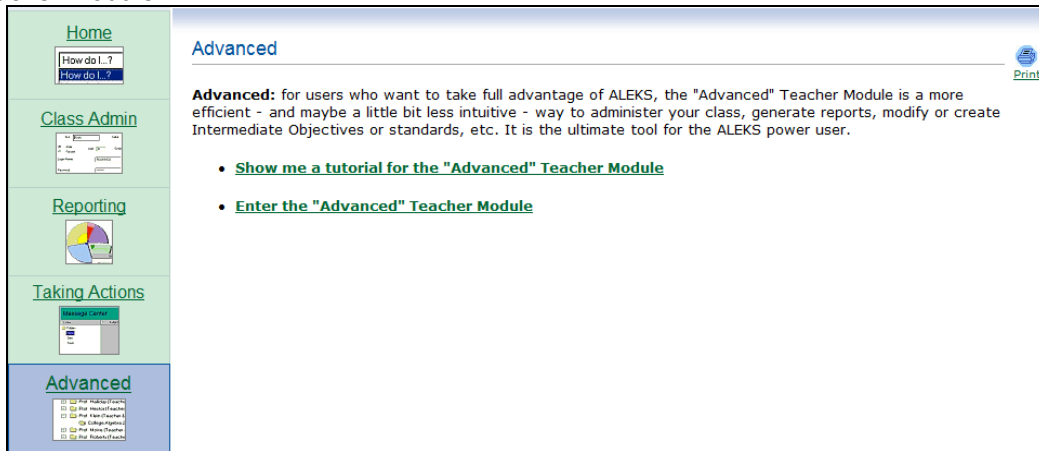


ALEKS®

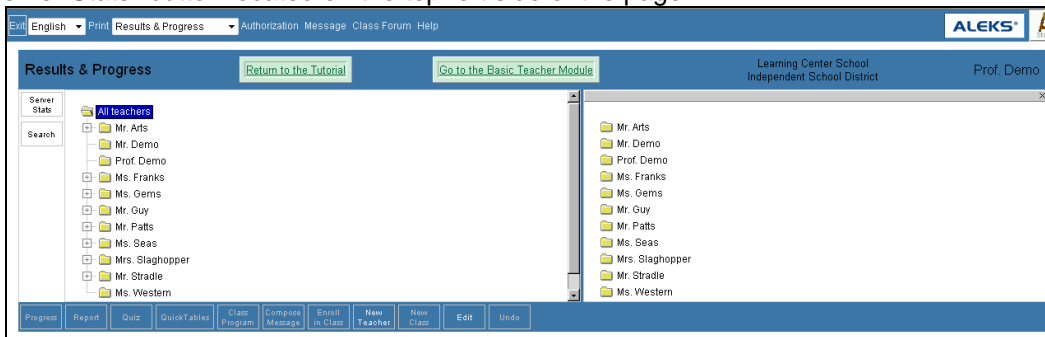
Annual Yearly Progress (AYP) Report

The Annual Yearly Progress (AYP) Report is available to ALEKS school administrators. This feature allows administrators to run a report on student mathematics achievement and compare class performance for any time interval, beginning with a 6 month minimum. The AYP Report provides a comprehensive overview of student and class performance, and is just one of the many robust reports available to help monitor dramatic learning outcomes achieved with ALEKS.

The AYP Report can be generated from the Advanced Module of an ALEKS Administrator Account. Click on the "Advanced" tab to transition from the Basic Module to the Advanced Module, followed by clicking on the "Enter the 'Advanced' Teacher Module" link.



Click on the "Server Stats" button located on the top-left side of the page.



From the "Statistics" drop down menu, select "Average Progress Report" and click on the "Compute" button. Next, select a timeframe for the report, and click on the "Generate PDF" button. ALEKS will generate the report in PDF format.

Note: The minimum time period that can be selected is six months.

Statistics: Average Progress Report Compute

Average Progress Report

Shows student progress from beginning date to ending date for the period selected below.

In general, the report will be most useful if the dates coincide with the beginning and ending of the school year.

Note:

- The minimum period that may be selected is six months.
- Data from students not spending at least 3/4s of an hour per week on ALEKS has been excluded from this report

Please set the following and click on 'Generate'.

School Year: 2008 - 2009

From: August 1

To: June 30

Generate PDF

The first page of the report displays the following useful information to administrators:

- a complete list of the ALEKS courses at the school
- the number of students in each of these courses
- the average number of hours spent in ALEKS
- the students' beginning knowledge
- the students' ending knowledge
- the percentage points gained

Learning Center School
Average Progress Report

Based on ALEKS use from 08/01/2008 to 06/30/2009

Summary of all courses

ALEKS course	Number of students	Average hours spent in ALEKS	Beginning Knowledge (student avg)	Ending Knowledge (student avg)	Percentage Points Gained
Middle School Math Course 1	1	22.1 hours	14%	44%	30
Middle School Math Course 3	1	46.3 hours	8%	86%	78
High School Preparation for Algebra 1	1	21.2 hours	29%	100%	71
Algebra 1	14	39.6 hours	16%	54%	38
High School Geometry	10	36.6 hours	26%	62%	36
Algebra 2	1	100.1 hours	13%	78%	65
PreCalculus	1	0.8 hours	2%	9%	7
Math Prep for TAKS – HS Exit Exam	12	29.5 hours	20%	47%	27

NOTE: To achieve significant learning outcomes, we recommend that K-12 math students use ALEKS at least 3 hours per week, and a minimum of 60 hours per school year.

Subsequent pages in the report provide information for each ALEKS class within the school, including:

- the number of students who have taken assessments
- the total hours worked during the timeframe
- the average number of hours spent in ALEKS
- the students' average beginning knowledge
- the students' average ending knowledge
- the percentage of topics mastered by students who worked more than 30 hours
- the percentage of topics mastered by students who worked less than 30 hours

Learning Center School

Algebra 1 Average Progress Report

Based on ALEKS Algebra 1 use from 08/01/2008 to 06/30/2009

Key: Beginning Knowledge Ending Knowledge

Summary:
 From 08/01/2008 to 06/30/2009, a total of 14 students took an initial assessment in ALEKS Algebra 1. These students worked an average total of 39.6 hours during this period. They began with an average knowledge of 16% of the topics in the course and ended with an average knowledge of 54% of the topics in the course.

Students who worked *less than 30 hours* on ALEKS ended with an average of 34% of the topics mastered.
 Students who worked *more than 30 hours* on ALEKS ended with an average of 69% of the topics mastered.

Group	Number of students	Average hours spent in ALEKS	Overall Topics Mastery		Arithmetic Readiness		Real Numbers and Linear Equations		Functions and Systems of Equations		Polynomials and Quadratic Equations		Rational Expressions and Proportions		Exponents and Square Roots		Geometry and Trigonometry		Data Analysis and Probability		
			Beginning Knowledge	Ending Knowledge	Beginning Knowledge	Ending Knowledge	Beginning Knowledge	Ending Knowledge	Beginning Knowledge	Ending Knowledge	Beginning Knowledge	Ending Knowledge	Beginning Knowledge	Ending Knowledge	Beginning Knowledge	Ending Knowledge	Beginning Knowledge	Ending Knowledge	Beginning Knowledge	Ending Knowledge	
All students using ALEKS	14	39.6	16%	54%	49%	92%	26%	66%	5%	35%	0%	22%	0%	25%	4%	47%	18%	65%	4%	55%	
Students with less than 30 hours using ALEKS	6	9.6	16%	34%	50%	82%	24%	43%	5%	12%	0%	3%	1%	9%	2%	21%	14%	41%	4%	32%	
Students with more than 30 hours using ALEKS	8	62.1	17%	69%	48%	99%	27%	83%	5%	52%	0%	37%	0%	37%	6%	67%	21%	82%	3%	73%	
<i>Breakdown by teacher</i>																					
Ms. Franks's classes	6	51.8	12%	64%	35%	99%	19%	76%	4%	47%	0%	33%	0%	34%	3%	63%	12%	84%	1%	59%	
Mr. Patts's classes	4	26.2	17%	43%	54%	85%	23%	53%	4%	21%	0%	9%	2%	17%	1%	32%	19%	48%	7%	57%	
Students previously in this ALEKS course	4	34.7	23%	49%	66%	88%	37%	64%	7%	30%	0%	19%	0%	21%	9%	39%	25%	53%	5%	48%	