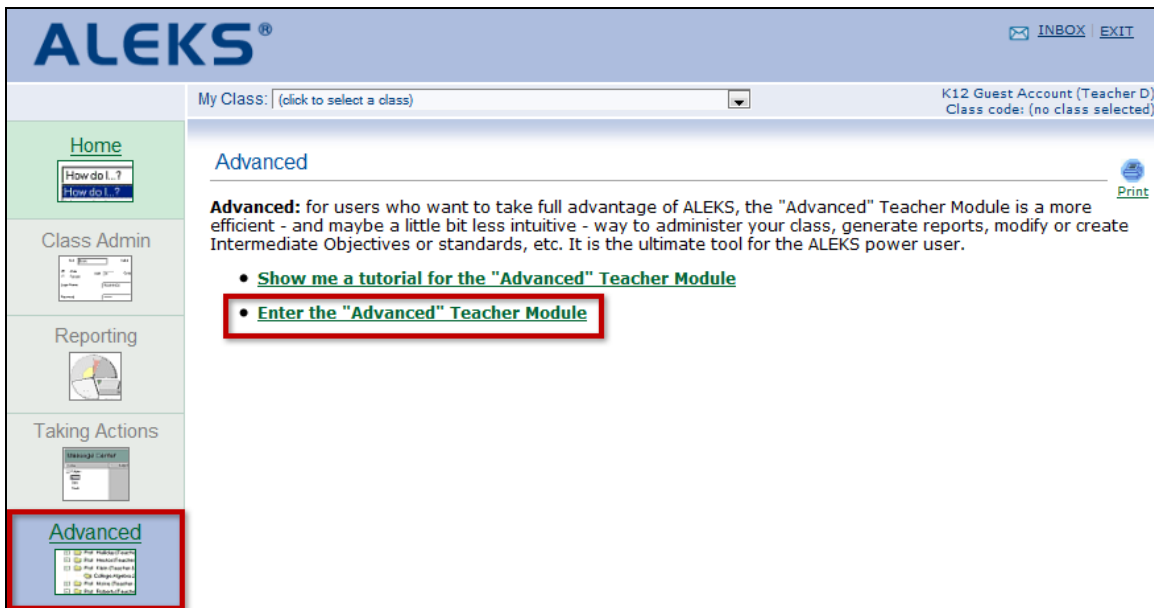


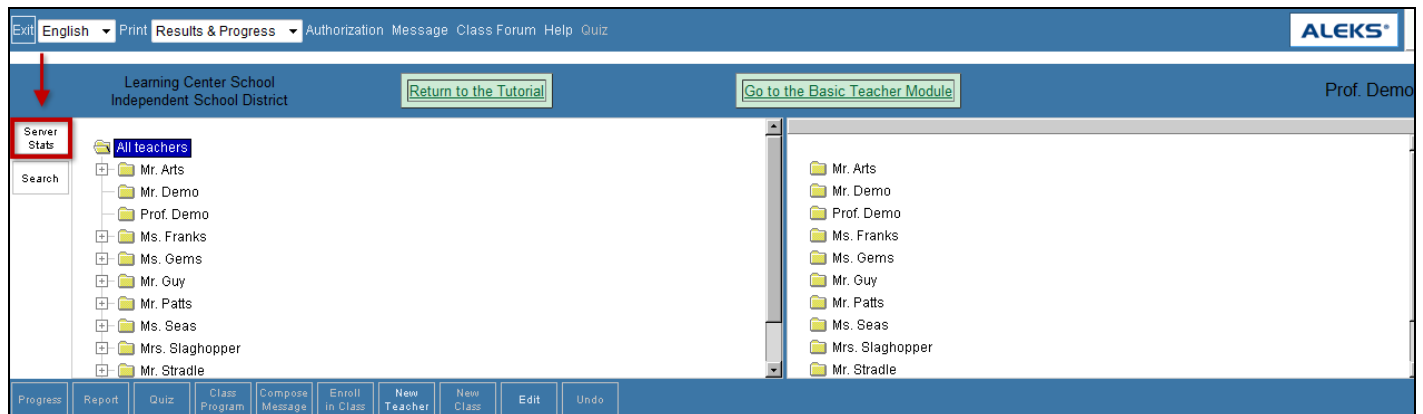
Average Progress Report (APR)

The Average Progress Report (APR) is available to ALEKS school administrators. This feature allows administrators to run a report on student mathematics achievement and compare class performance for any time interval, beginning with a one month minimum. The APR Report provides a comprehensive overview of student and class performance, and is just one of the many robust reports available to help monitor dramatic learning outcomes achieved with ALEKS.

The APR Report can be generated from the Advanced Module of an ALEKS Administrator Account. Click on the "Advanced" tab to transition from the Basic Module to the Advanced Module, followed by clicking on the "Enter the 'Advanced' Teacher Module" link.



Click on the "Server Stats" button located on the top-left side of the page.



From the "Statistics" drop down menu, select "Average Progress Report" and click on the "Compute" button. Next, select a timeframe for the report, and select an option from the drop-down menu to highlight students who have met a specified time requirement in ALEKS. Click on the "Generate PDF" button to generate the report in PDF format.

Note: The minimum time period that may be selected is one month.

Statistics: Average Progress Report Compute

Average Progress Report:

View student progress from beginning date to ending date for the period selected below. In general, the report will be most useful if the dates coincide with the beginning and ending of the school year.

Please set the following and click on "Generate PDF".

School Year: 2012 - 2013

From: August 1

To: June 30

Note: The minimum period that may be selected is 1 month.

Highlight students who have worked in ALEKS at least: 30 hours

Generate PDF

The first page of the report displays the following useful information to administrators:

- a complete list of the ALEKS courses at the school
- the number of students in each of these courses
- the average number of hours spent in ALEKS
- the students' beginning knowledge
- the students' ending knowledge
- the percentage points gained

ALEKS Independent School District

Algebra 1 Average Progress Report

Based on ALEKS Algebra 1 use from 08/01/2012 to 06/30/2013

Key: Beginning Knowledge Ending Knowledge

Summary:
 From 08/01/2012 to 06/30/2013, a total of **29** students took an initial assessment in ALEKS Algebra 1. These students worked an average total of **30.9 hours** during this period. They began with an average knowledge of **18%** of the topics in the course and ended with an average knowledge of **49%** of the topics in the course.

Students who worked *less than* 30 hours on ALEKS ended with an average of **35%** of the topics mastered.
 Students who worked *more than* 30 hours on ALEKS ended with an average of **67%** of the topics mastered.

Group	Number of students	Average hours spent in ALEKS	Overall Topics Mastery		Arithmetic Readiness		Real Numbers and Linear Equations		Functions and Systems of Equations		Polynomials and Quadratic Equations		Rational Expressions and Proportions		Exponents and Square Roots		Geometry and Trigonometry		Data Analysis and Probability		
All students using ALEKS	29	30.9	18%	49%	49%	86%	26%	62%	7%	30%	2%	18%	4%	22%	8%	42%	19%	57%	6%	52%	
Students with less than 30 hours using ALEKS	16	13.1	20%	35%	49%	77%	27%	45%	9%	17%	4%	6%	6%	11%	10%	25%	21%	42%	8%	33%	
Students with more than 30 hours using ALEKS	13	52.8	17%	67%	49%	98%	25%	83%	5%	46%	0%	32%	0%	37%	7%	63%	18%	75%	4%	75%	
<i>Breakdown by school</i>																					
Learning Center School	14	39.7	16%	55%	49%	92%	26%	66%	5%	35%	0%	24%	0%	28%	4%	48%	18%	65%	4%	56%	
Summerwind High School	15	22.7	20%	44%	50%	81%	27%	58%	9%	26%	5%	11%	7%	17%	12%	36%	22%	50%	9%	48%	

Subsequent pages in the report provide information for each ALEKS class within the school, including:

- the number of students who have taken assessments
- the total hours worked during the timeframe
- the average number of hours spent in ALEKS
- the students' average beginning knowledge
- the students' average ending knowledge
- the percentage of topics mastered by students who worked more than the indicated time requirement
- the percentage of topics mastered by students who worked less than the indicated time requirement

ALEKS Independent School District																					
Algebra 1 Average Progress Report																					
Based on ALEKS Algebra 1 use from 08/01/2012 to 06/30/2013																					
Key: <input type="checkbox"/> Beginning Knowledge <input checked="" type="checkbox"/> Ending Knowledge																					
Summary:																					
From 08/01/2012 to 06/30/2013, a total of 29 students took an initial assessment in ALEKS Algebra 1.																					
These students worked an average total of 30.9 hours during this period. They began with an average knowledge of 18% of the topics in the course and ended with an average knowledge of 49% of the topics in the course.																					
Students who worked <i>less than</i> 30 hours on ALEKS ended with an average of 35% of the topics mastered.																					
Students who worked <i>more than</i> 30 hours on ALEKS ended with an average of 67% of the topics mastered.																					
Group	Number of students	Average hours spent in ALEKS	Overall Topics Mastery		Arithmetic Readiness		Real Numbers and Linear Equations		Functions and Systems of Equations		Polynomials and Quadratic Equations		Rational Expressions and Proportions		Exponents and Square Roots		Geometry and Trigonometry		Data Analysis and Probability		
All students using ALEKS	29	30.9	18%	49%	49%	86%	26%	62%	7%	30%	2%	18%	4%	22%	8%	42%	19%	57%	6%	52%	
Students with less than 30 hours using ALEKS	16	13.1	20%	35%	49%	77%	27%	45%	9%	17%	4%	6%	6%	11%	10%	25%	21%	42%	8%	33%	
Students with more than 30 hours using ALEKS	13	52.8	17%	67%	49%	98%	25%	83%	5%	46%	0%	32%	0%	37%	7%	63%	18%	75%	4%	75%	
<i>Breakdown by school</i>																					
Learning Center School	14	39.7	16%	55%	49%	92%	26%	66%	5%	35%	0%	24%	0%	28%	4%	48%	18%	65%	4%	56%	
Summerwind High School	15	22.7	20%	44%	50%	81%	27%	58%	9%	26%	5%	11%	7%	17%	12%	36%	22%	50%	9%	48%	